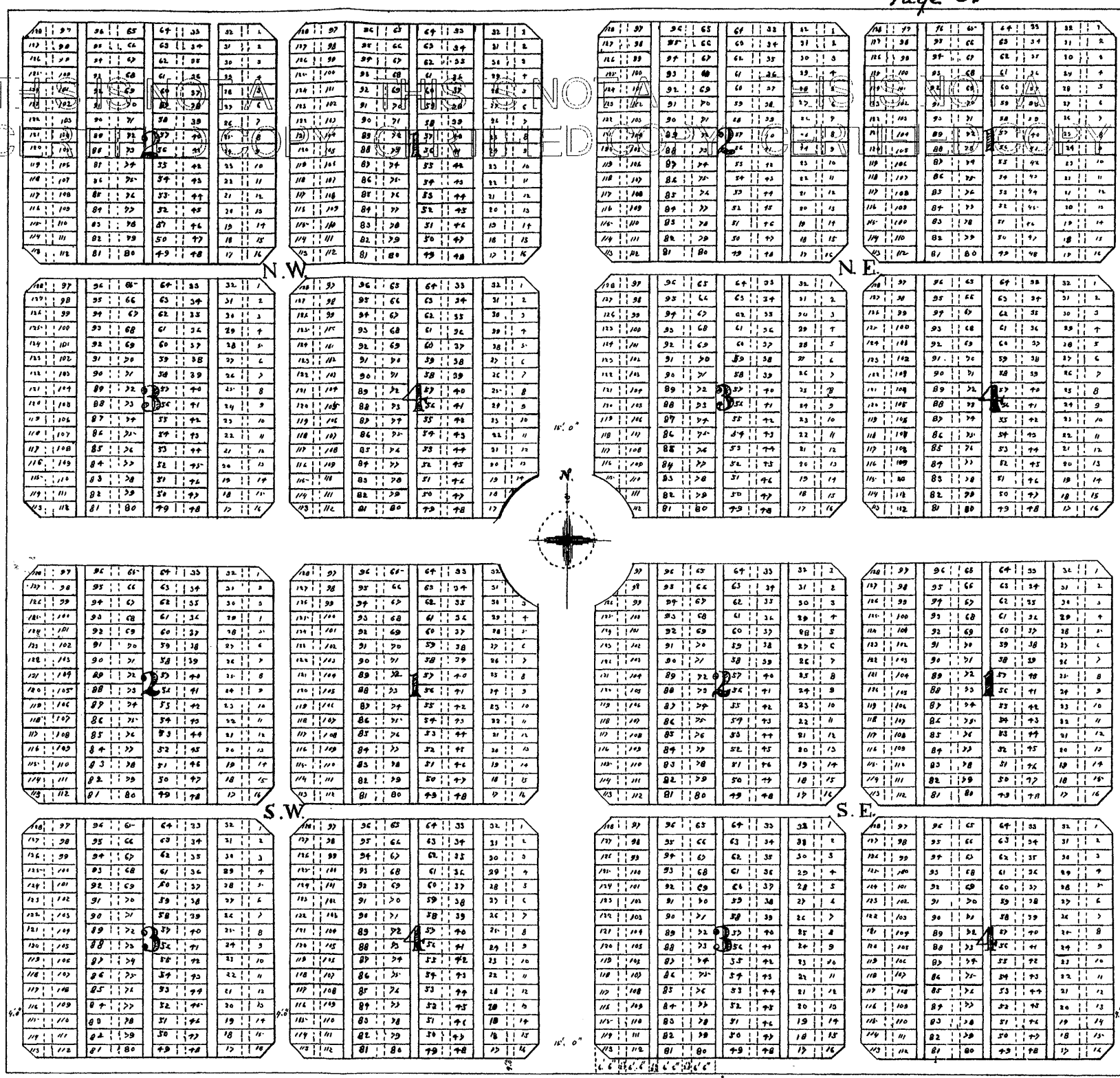
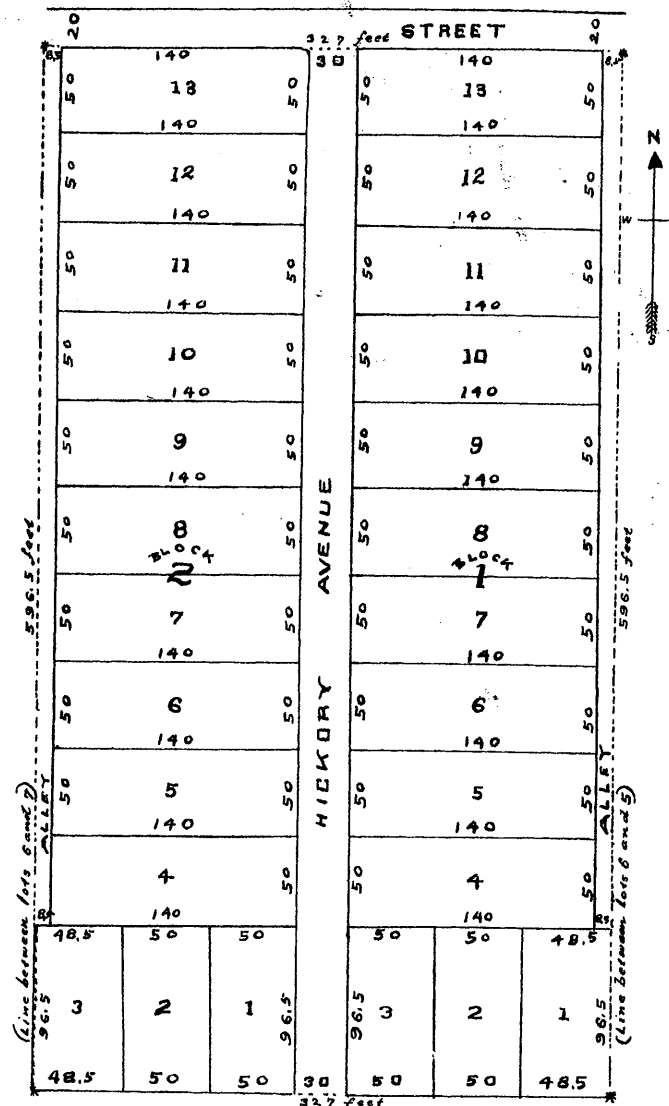


THIS IS NOT A
CERTIFIED COPY
STACEY SUBDIVISION
THE SAME BEING A SUBDIVISION OF LOT "6"
OF I. J. BEATTY'S SUBDIVISION OF THE SOUTH 1/4
OF THE S.W. 1/4 OF SEC. 15 T. 29. S. R. 18. E. FLA.
AS RECORDED IN PLAT BOOK NO 2 PAGE 16
RECORDS OF HILLSBOROUGH COUNTY FLORIDA.



FILED FOR RECORD
MARCH 20TH 1905
C.M. KNOTT CLERK
D.W. EVERET. D.C.

RECORDED
20
D.W. EVERET. D.C.

CEMENTERIO ESPAÑOL.

1904.

= Description of Cemetery Plot =

Beginning at a point 11 1/2 ft. West and 15 ft. North of the S. E. corner of
the N. W. Quarter of the S. W. Quarter of Section 8, Township 29, South Range 19 East,
running thence North 28 1/2 ft. thence West 300 ft. thence South 28 1/2 ft. thence East 300 ft.
to point of beginning

A L F R E D H. P A R S L O W
A R C H I T E C T
T A M P A , F L O R I D A

FILED FOR RECORD
FEB. 6TH 1905
C.M. KNOTT CLERK
D.W. EVERETT D.C.